

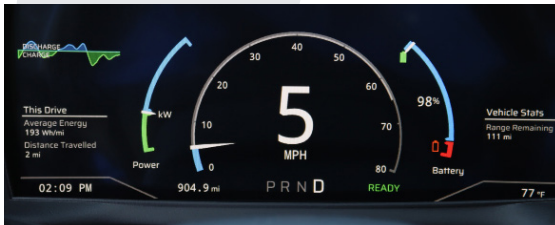


FLEETS POWERED BY LIGHTNING

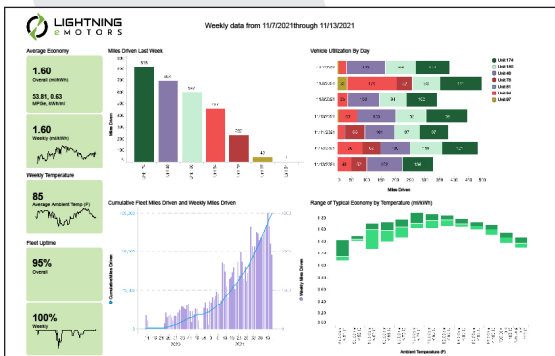
Over 100 Class 3 Lightning eMotors EVs successfully deployed in North America

Lightning Electric Transit Cargo Van

- ✓ Battery-electric vehicle
- ✓ Smooth, quick and quiet
- ✓ Engineered and built in the USA
- ✓ Class-leading efficiency
- ✓ Elegant cabin integration with batteries fully under the floor
- ✓ CARB certified and HVIP eligible
- ✓ Lightning Analytics gives insight into usage and efficiency
- ✓ Available New or Repower



Lightning's digital dashboard provides all the information the driver needs



Lightning Analytics provides real-time and time-summarized data on the performance of our EVs in your fleet

The **Lightning Electric Transit cargo van** is equipped with a state-of-the-art electric drivetrain which delivers the best efficiency of any vehicle in its weight class, while providing a quiet, smooth and familiar driving experience that your drivers will love.

Operated by major parcel carriers, hospital systems and others across North America, the cargo van is reliable and efficient.

Available in battery-electric versions offering 70-mi, 140-mile and 170-mile ranges, this van provides practical, reliable service while producing zero emissions on the road. Charging is simple and quick, with both Level 2 AC charging and DC Fast Charge supported.

We use the highest-quality components available, including thermally-managed batteries which deliver the best range, efficiency and lifetime of any batteries in the market. The batteries are fully under the floor, so your cargo space isn't compromised.

Let us put you in the driver's seat!

Phone: **1-800-223-0740**

Email: info@lightningemotors.com



Lightning eMotors' EV powertrain is over 83% domestic origin by cost



Satisfies conditions (A) & (B) of Title 49 U.S.C. § 50101(b)(3)

Lightning Electric Transit Cargo Van

Specifications



Base chassis	Transit 350HD Cargo Van		
GVWR	10,360 or 11,000 lbs		
Wheelbase	148 in		
Charging options	Level 2 AC at 13.2 kW and DC Fast Charge (up to 80 kW) with J1772 CCS1 Combo		
Efficiency	61 MPGe / EPA City and 66 MPGe / EPA Highway		
Driving range*	up to 70 miles	up to 140 miles	up to 170 miles
Battery capacity	40 kWh (nameplate) 36 kWh (usable)	80 kWh (nameplate) 73.6 kWh (usable)	120 kWh (nameplate) 110.4 kWh (usable)
Charge time	3 hours (Level 2, at up to 13.2 kW) 1 hour (DC Fast Charge, at up to 80 kW)	5 hours (Level 2, at up to 13.2 kW) 1.5 hours (DC Fast Charge, at up to 80 kW)	8.5 hours (Level 2, at up to 13.2 kW) 2 hours (DC Fast Charge, at up to 80 kW)
Payload**	3,425 lbs (10,360 GVWR) 4,065 lbs (11,000 GVWR)	3,498 lbs (10,360 GVWR) 4,138 lbs (11,000 GVWR)	2,859 lbs (10,360 GVWR) 3,499 lbs (11,000 GVWR)
Maximum speed	65 mph (electronically limited)		
Peak Power	215 HP (160 kW)		
Torque Rating (after transmission)	733 lb-ft (994 Nm)		
Warranty	Base Chassis: Ford standard warranty Electric powertrain and batteries: Lightning eMotors standard warranty (5 year / 60,000 miles)		
Analytics	✓ Preventive Maintenance	✓ Range Analysis	✓ Driver Behavior

* All-electric range can vary depending on route or drive cycle, environmental conditions, vehicle or equipment configurations, and driver behavior.

** Payload and passenger capacity can vary and greatly depend on vehicle wheelbase, seating configuration, and other characteristics or features as delivered by the OEM or chassis manufacturer. Equipment added to the base chassis by aftermarket upfitters or equipment installers could also affect payload and passenger capacity.

Lightning's team of fleet experts stand behind our work and provide exceptional customer service, from vehicle deployment and technical support to custom analytics reports and operator training.

Contact us today!

Phone: **1-800-223-0740 / +1 970-744-4047**

Email: **info@lightningemotors.com**



Save vehicle downtime with no emissions testing



Zero emissions means cleaner air in communities you serve



Fewer parts means lower maintenance costs



Regenerative braking dramatically reduces brake wear



Significant savings on operating costs



BEVs save money on fuel costs

February 2022. The information presented here may be subject to change at any time.

@ 2022 Lightning eMotors

info@lightningemotors.com

lightningemotors.com

