



# J4500 CHARGE™

Zero-emission  
battery-electric coach.



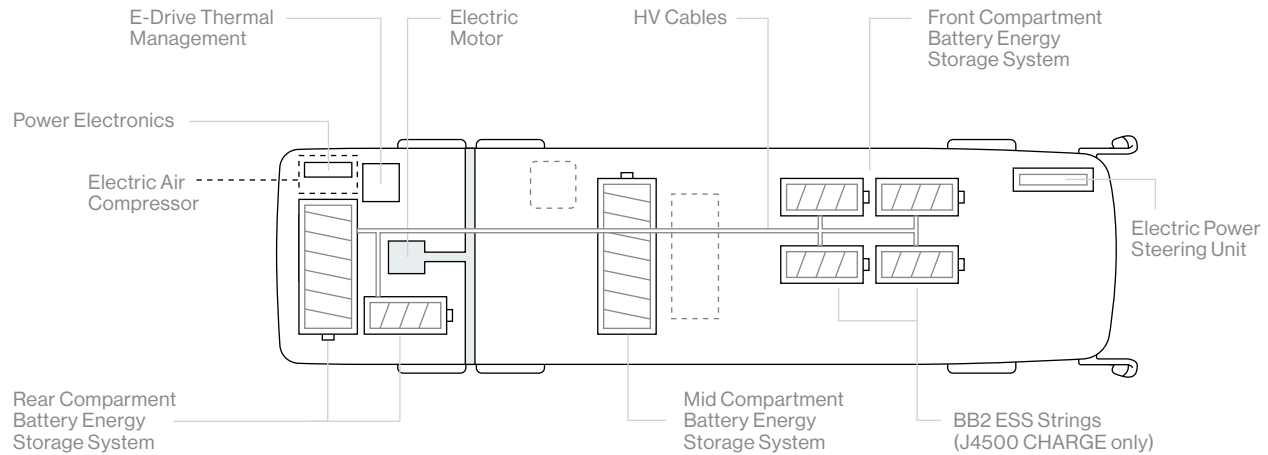
**The J4500 CHARGE™ brings all-electric capability to the industry's best seller in tour, charter, and employee shuttle markets.**

With electrically driven components and MCI's smooth riding suspension, these highway coaches can instantaneously accelerate and power through the steepest road grades while providing a quiet comfortable ride for passengers.

## How it works.

The J4500 CHARGE™ uses an electric motor powered by energy stored in rechargeable batteries.

The J4500 CHARGE™ electric platform is supported by New Flyer's 50 years of zero-emission propulsion experience and leverages NFI Infrastructure Solutions™, a service dedicated to providing safe, sustainable, and reliable charging solutions.



## Benefits



A 3320 ft-lbs high-torque Siemens electric drive system designed to handle long-distance applications and highway speeds.



Energy-dense nickel manganese cobalt (NMC) lithium ion batteries with high-power plug-in charging from empty to full in under 4 hours.



Range: 230+ miles.



Regenerative braking, capturing kinetic energy to recharge the battery system, making for highly efficient driving in start-stop traffic conditions.



# MCI

## NFI Infrastructure Solutions™

NFI Infrastructure Solutions™ is a service dedicated to providing safe, reliable, smart and sustainable charging and mobility solutions. Learn what NFI Infrastructure Solutions™ can do for you at [nfigroup.com/IS](https://nfigroup.com/IS)

### What our Infrastructure Solutions team provides.



Supports mobility projects from start to finish.



Provides infrastructure planning and development.



Focuses on energy management optimization.



Provides cohesive transition of coach fleets to zero-emission electric technology.

## Charging.

MCI battery-electric models comply with SAE J1772 standards. You can customize your Energy Storage Systems (ESS) and charging solutions so you can develop the right ESS and infrastructure solution for your needs.

The J4500 CHARGE™ is interoperable with charging systems available from: Siemens, ABB, Chargepoint, Heliox.

**SIEMENS**

**ABB**

**-chargepoint+**

**heliox**



### Plug-In Charging

Depot charging reduces infrastructure cost, complexity, and battery degradation. Plug-in chargers can be used for overnight, mid-day, and on-route charging.

**The J4500 CHARGE™ has a range of 230+ miles (544 kWh)\* on a single charge, but with on-route charging, range is unlimited.** \*Range is dependent on duty cycle

ESS(kWh)	Range	Charge Time
544	240	< 4 hrs





# MCI

## CONNECT 360™

Connect 360™, operated by NFI Connect™, is a customizable performance dashboard that provides smart analytic reporting to expand insight and intelligence for managing your battery-electric coaches.



**Additional range** capability with improved driver performance.



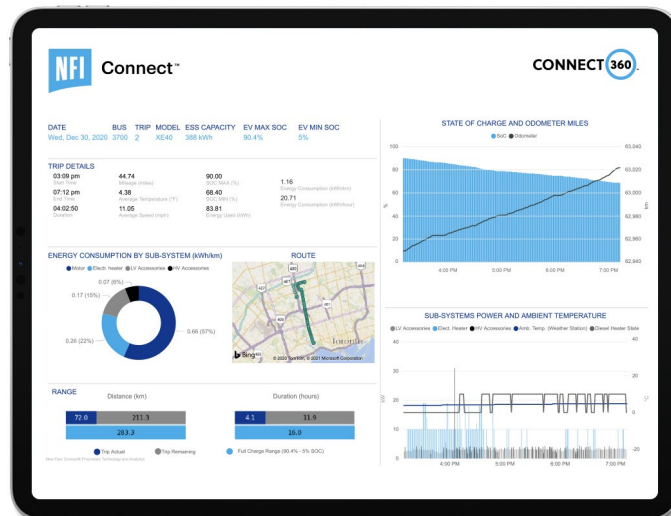
**Intelligence** on how to preserve battery energy throughout the day.



**Decision-making information** to optimize charging strategies.



**Reduced operating cost** and maximum fleet utilization.



Connect 360™ is included on every new battery-electric coach. Learn more at [nfigroup.com/connect](http://nfigroup.com/connect)

## Reliable service and support.

MCI service and support delivers a relationship-driven and responsive approach to customer care.



Comprehensive support that includes in-field expertise, technical call center and 24/7 roadside assistance.



Ongoing technical training from the industry's only Automotive Service Excellence (ASE) accredited MCI Academy technician training center.



Customizable programs to fit your financial needs through NFI Financial Solutions™.



Aftermarket parts support from NFI Parts™, the industry's largest parts supplier.



MCI Service Center - from routine maintenance and warranty to complex troubleshooting, you'll find all the help you need.

# MCI

## MCI model specification highlights.

### J4500 CHARGE™

#### Body

Length	45.58'	13.80 m
Width	102.0 "	2.59 m
Roof Height	140.75"	3.58 m
Tire Size	315/80 R22.5	
Approach Angle	9.5°	
Breakover Angle	8.8°	
Construction	Semi-Monocoque low-corrosion stainless steel frame	
Body Material	Fiberglass composite	

#### Propulsion System

Motor	Siemens
Rated Power	260 kW
Maximum Torque	3320 ft-lbs
Transmission/Gearbox	4.7 gear ratio direct drive

#### Energy Storage System

Battery Type	63 Ah NMC lithium ion Ultra-High Energy cell by XALT
Battery Capacity	544 kWh
Usable SoC	85+%
Battery Recycling Available	Yes

#### Charging Plug-In

Charge Rate (kW)	150+
Charge Time (5% to 95%)	< 4 hrs
Plug / Adapter / Interface	CCS 1
Number of Charge Ports	1
Location(s) of Charge Ports	Rear curbside
EVSE Type (AC or DC)	DC
EVSE Supply Voltage	150 - 850 VDC
EVSE Maximum Charge Current	200 A
EVSE Mounting Type	Wall/cabinet
EVSE IP Rating	IP 54
EVSE Smart Charging Capabilities	Available
EVSE Manufacturers Certified for Use	All SAE J1772-compliant manufacturers
EVSE Buy America Compliant Manufacturer	No

## MCI model specification highlights.

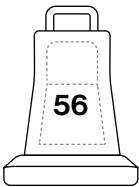
### Performance

<b>Nominal Range</b> (estimated low to heavy usage)	J4500 CHARGE™	
	163 - 233 miles	262 - 375 km
<b>Top Speed</b>	72 mph	116 kph
<b>Meets or exceeds APTA gradeability requirement</b>	<b>10% Grade:</b> 15 mph                      24 kph  <b>2.5% Grade:</b> 40mph                      64 kph	

### Weight

<b>Curb Weight</b> (estimated)	~45,000 lbs	20,500 kg
<b>Gross Vehicle Weight Rating</b>	54,000 lbs	24,494 kg
<b>Gross Axle Weight Rating – Front</b>	17,000 lbs	7,711 kg
<b>Gross Axel Weight Rating – Rear</b>	<b>Drive:</b> 24,000 lbs <b>Tag:</b> 16,500 lbs	10,886 kg    7,484 kg

### Passenger Capacity



### Warranty

<b>Vehicle</b>	24-month limited warranty including 12-year structural warranty, unlimited mileage
----------------	--

# MCI



## MCI J4500™

[MCIcoach.com/electric](http://MCIcoach.com/electric)



[MCIcoach.com/electric](http://MCIcoach.com/electric)

**VIC** | VEHICLE INNOVATION CENTER

Learn more about this technology at the Vehicle Innovation Center  
[nfigroup.com/vic](http://nfigroup.com/vic)